

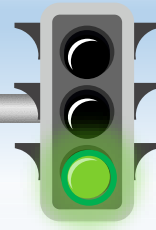


Waterfield Primary School

# Road to Recovery



# Rationale



Waterfield is delighted to be opening to **all** of our children. Whilst it is important to remember that we are still living under the restrictions of 'lockdown' and we will all feel the longer-term effects of the pandemic for much time to come, we must now ensure that every opportunity is harnessed to 'Catch Up', 'Keep Up' and 'Recover'.

Moving forward on our 'Road to Recovery', it is important that we reflect and learn from the journey we have been on. As a community we will reflect and adapt our practices to ensure we work with our colleagues at *The Collegiate Trust* to deliver 'Exceptional Education for ALL'.

As ever, our dynamic responses will be underpinned by our School Community Values of Kindness, Respect and demonstrating a Hardworking Attitude.

Moving forward, our curriculum for the rest of this year will focus on ensuring that children master key skills and concepts that we believe will enable them to confidently embark on their next full year of learning. We will be looking to bolster our programme of education through our enhanced technology skills (that have been developed in our time during Remote Blended Learning). Finally, and most importantly, we will be acknowledging the different and personal journey every staff member, family and CHILD has had through lockdown, working to rebuild confidence, develop interpersonal skills and re-establish our community.

Whilst we acknowledge the final 'Catch Up' period will look different for everyone, we are confident by setting forward a strong 'Road to Recovery' we can build on strength, diminish gaps in learning and inspire confidence - setting Waterfield once more at the heart of our community.







From 8<sup>th</sup> March 2021, Waterfield will welcome children back to school. This will be supported through carefully planned and managed staggered starts, ends and drop-off points. Primarily, the Health and Safety of ALL will be paramount.





## Recovery Curriculum

Alongside The Collegiate Trust, Waterfield has developed a Core Curriculum of skills that will provide the children with learning experiences that focus on Key Skills/Principles that we believe are essential to them, fulfilling the requirements of their current Academic Year. Our Full Recovery Curriculum Documents can be explored on our Website.



## Focus on Personal Development & Wellbeing



A huge focus will be placed on re-integration into school life. Waterfield will be conducting 'Return to School' surveys for children, ensuring Physical Education is prioritised and launching a substantial Wellbeing curriculum to compliment our already robust PSHCCE teaching through the NEWLY launched WELLBEING JOURNALS.





## An Integrated Community Approach

We understand the importance of 'School' to our community. We understand the crucial role all adults in our community have to one another and of course to our children. As a school we have always thought of parents/carers as the Co-Educator of our children. We will be looking (as time allows) to re-establish and develop close links between home and school, enabling everyone to benefit from a sense of cohesion and co-education.



## Personalised Learning

Waterfield will use sensitive and careful assessment techniques that will allow teachers to quickly establish 'gaps' in knowledge and learning behaviours. Through the use of Precision Teaching Groups, Integrated Technology (Google Classroom) and Digital Platforms, we will aim to personalise the learning journey for the children. We will therefore be aware of EVERY SINGLE child's starting point. Our aim will be for every child to finish this academic year with the knowledge and skills they need to unlock the next stage of their education.







## School Days

***‘Those were the best days of my life’.***

We understand success at school is more than *just* academic achievement. We want everyone to draw on happy and fond memories from their earliest experiences of education. We believe school should foster ambition and allow all children to shine. We will be looking at ways to enhance our provision to engage, enthral and add that little sprinkle of magic to the remainder of this unusual School Year.



The background features a light purple field filled with various white line-art icons representing different subjects: a calculator, a paint palette, a microscope, a globe, a magnifying glass, a book, a pencil, a lightbulb, a computer monitor, a rocket, a leaf, a pie chart, a bar chart, a line graph, a compass, a ruler, a protractor, a pair of scissors, a pencil sharpener, a pencil case, a pencil, a pen, a paper airplane, a paper boat, a paper plane, a paper helicopter, a paper airplane, a paper boat, a paper plane, a paper helicopter, a paper airplane, a paper boat, a paper plane, a paper helicopter. A grey winding road with a dashed white line runs from the bottom left towards the top right. A purple location pin with a white circuit board icon is placed on the road.

## Facilities Investment

Many of you will have heard of the extra funding schools have received. Supported by *The Collegiate Trust*, Waterfield has made substantial investment into learning resources, facilities and technology. This will ensure that our school offers the broadest and best range of advanced opportunities.





## Wellbeing & PSHCCE

Children will be reintegrated into school over our planned transition weeks. Our Inclusion department have already been in contact with families whose specific circumstance may benefit from a slower and more personalised transition.

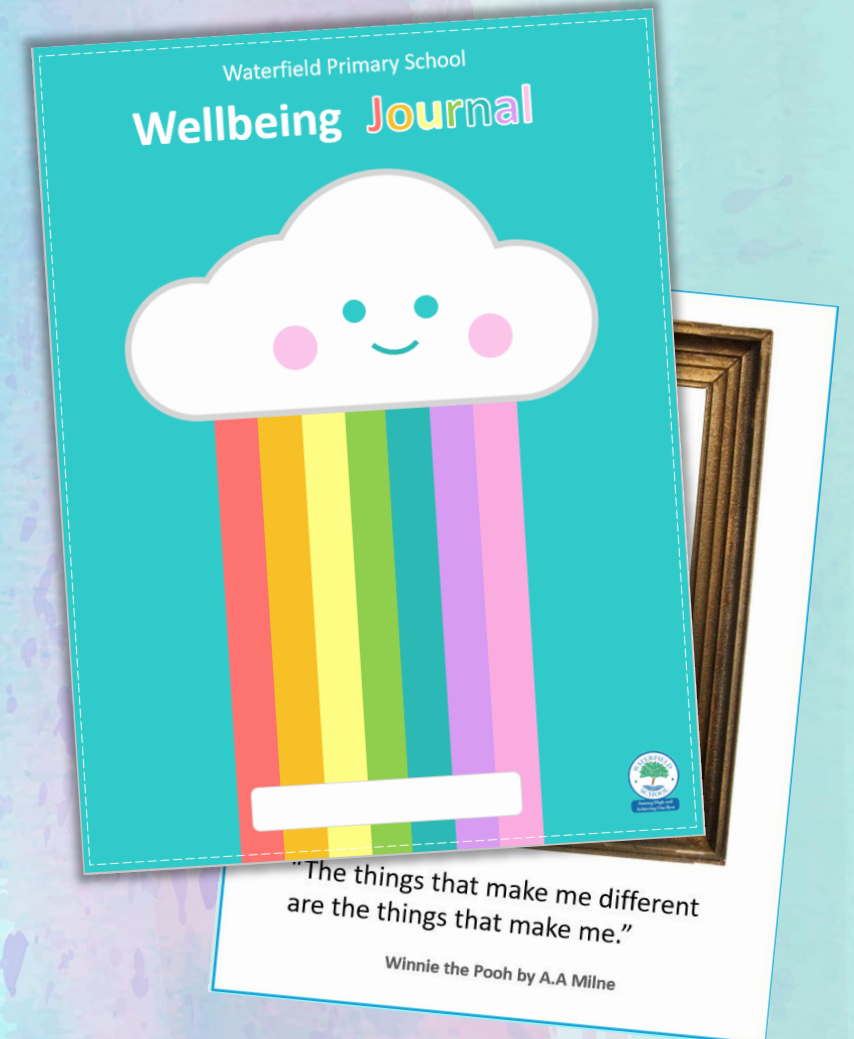
The time between March and Easter will be used carefully to re-establish learning behaviours, re-affirm friendship bonds and allow staff time to understand the journey the children have taken through 'Lockdown'.

### Key Features of our Wellbeing & PSHCCE focus will be:

- A Pastorally Focused LAUNCH WEEK entitled – Sustainability WOW Week: Featuring the Farmvention Competition and some very special events – SEE HERE (HH insert link)
- The launch of the NEST – A calm, dedicated space dedicated to Nurture and Extended Specialist Teaching.
- A refocused PSHCCE Curriculum supported by new resources like the Kimochis in Lower School, Yoga and Mindfulness throughout and the introduction of the Wellbeing Journals which will allow for reflection, gratitude and personal affirmation to be explored.
- Wellbeing Surveys and individual 1:1 review meetings between teacher and pupil.
- Sports and Fitness Clubs launched and continued support of our Specialist PE Coach, Storm Basketball and Outdoor Forest School.

### Parents will be supported through:

- A 1:1 Parent Teacher Conference Phone Appointment to discuss reintegration and School Launch.
- Inclusion Family Review by Karen Billington
- Development of our School Calendar of Events (as we are allowed to open up our School Site)
- Dedicated Office Support in applications for Free School Meals/Pupil Premium Status



Our brand-new **Wellbeing Journals**



Core skills, knowledge and understanding in Reading and Writing will be prioritised in our Recovery Curriculum. This essential document will support our planning for the remainder of our second Topic (Vehicle for Learning) and long into the Third.

Waterfield will prioritise Reading as a core skill. This reading will in turn support the children's writing.

We will be focusing heavily on phonics, and the basics of spelling, grammar and comprehension.

All teams will be working hard to integrate writing opportunities across our broad curriculum.



## Activities and resources to support English:

- Investment into new Reading Books for Accelerated Reader & Banded Books – Never before has Waterfield had as many high-quality texts that match the decodable and comprehension level of the children.
- Personalised access to Digital Platforms to support Reading and Phonics: Reading Eggs, Nessy and Monster Phonics.
- Additional Phonic lessons in Lower School & EYFS – featuring personalised learning through FUNKY PHONIC FLASHCARDS.
- Continuation of the embedding of the Waterfield Reading Spine – supporting the Reading into Writing approach through the use of VIPERS.
- Precision Teaching Groups based and allocated on careful and supportive assessments (Star Reading Tests, Writing Analysis & PM Benchmarking)
- Nelson Textbook Access from Year 2 upwards.



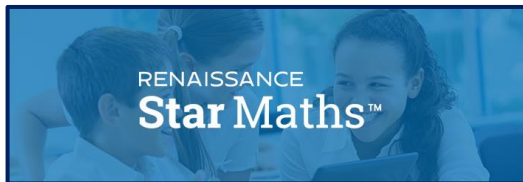


The fundamental arithmetic and place value skills will be a core focus as we move forward with mathematics. Whilst children will still experience the breadth of a full and engaging mathematics curriculum, we will be aiming to teach smaller discrete sessions of mathematics throughout the week. This will enable all children to become proficient in the foundational skills we know form the basis of strong mathematical reasoning i.e., understanding of place value, multiplication knowledge, number bonds, short and long-hand calculation methods.

Use of The Collegiate Trust's joint Maths Framework, our Recovery Curriculum and careful assessment will look both beyond and before the children's current Year Group. The embedding of Year Group non-negotiables will ensure that ALL children will reach the required standard of mathematics proficiency in calculation by the end of the academic year.

## Activities and resources to support Maths:

- Careful integration of digital support programmes including – MyMaths, Times Tables Rockstars, Maths Seeds and Purple Mash.
- Launch of STEAM – An integrated approach to teaching Science, Technology, Engineering, Arts and Mathematics, that will allow children the ability to see the true application of maths, raise ambitions and support cross linking of a broad and balanced curriculum.
- Careful assessment (supported by the new Star Maths) that will analyse personal gaps in skills/knowledge and allow for Precision Teaching Groups to be highly specified/targeted.
- High level of digital integration and use of Google Classroom.
- Increased practical resourcing to support concrete understanding and reasoning.





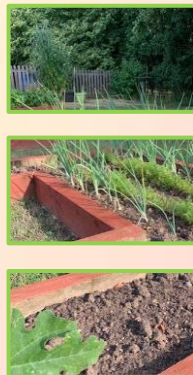
# The Wider Curriculum

Waterfield Primary School  
Curriculum

Waterfield prides itself on offering a wide, relevant and engaging curriculum. Our curriculum is supported by our bespoke 'Vehicles for Learning' (VfLs). The VfLs wrap our subjects around quality Core Texts and ensure learning is relevant, topical and based on our locality/context. We all acknowledge that the 'Road to Recovery' will be long and there is a danger that some may feel the need to sacrifice the breadth and joy that comes from experiencing a broad and balanced curriculum. At Waterfield we will continue to ensure that ALL children access the awe, wonder and sense of achievement that the ENTIRE National Curriculum provides and are confident that we will all experience the full range of subjects.

As ever, we will be placing a high focus on the Arts - working towards the *Arts Mark Accreditation* and making use of our wonderful resources: Arts Studio, Forest School/Outdoor Classroom, Specialist Music Teaching, Spanish Programme whilst complementing this with new and exciting projects, relating to STEAM: Robotics, Community Responsibility and of course PSHCCE.

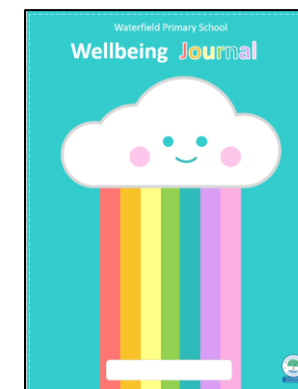
We understand that coming back to school will need to be fun and engaging in order to enable the children to remember the magic of learning – you will be able to follow all our curricular adventures through our Twitter Page: [@Waterfield TCT](https://twitter.com/Waterfield_TCT)





## Key Curriculum Activities and Events Coming soon...

- **STEAM LAUNCH – SUSTAINABILITY WOW WEEK** – Please explore this fantastic launch [here](#)
- **Special Visitors in EYFS & Year One** – The Incubators are arriving with eggs to hatch!
- **The Royal Academy Young Artists Competition**
- **The Waterfield Arts Festival** (Still planned for our Summer Term)
- **Basketball Lessons** with a specialist Coach in **Key Stage Two**
- **Outdoor Project – Forest School**
- The Development of our **Wellbeing Journals** featuring the **WATERFIELD 100 – 100 Childhood Challenges**
- **Reading Dog** – Our visiting Friends (when times allow) to continue our Reading Nurture programme
- **New Outdoor Learning Areas for the NEST & Key Stage One**
- Development of the **Nature Garden in Early Years**
- Launch of **SPELLING QUEST** a whole school adventure in Spelling
- Licensing for **Britannica Encyclopedia** for our new **Digital Research Library**





## SEND and Inclusion



Every child will take their individual journey along the 'Road to Recovery'. As an Inclusive school, we know that some children will require additional support along the way. Our Inclusion Team has already been in touch to create personal transition programmes including varying timetables, Nurture Drop Off, Soft Starts and other methods to support our children as they come back into school.

The most exciting aspect of re-opening is to introduce our NEST. The NEST will include a sensory space and provide a calm environment for targeted bespoke learning. The NEST boasts its own Tech Hub and secure outdoor learning space. The Nurture Extended Specialist Teaching unit will cater for ALL children, with our SLT taking groups of children who not only require additional support (from individual barriers to learning) but also those children who may have the potential to be 'more and most able' in different areas of the curriculum. The NEST truly helps us remove the glass ceiling on learning and allows everyone of us to FLY!

- Launch of THE NEST supporting The DIGITAL NESTS – The Digital Nests will utilise the Google Classroom to create a tailor-made learning space for our children who require it.
- Re-Establishing Launch of PARENT GYM
- Coffee Afternoons & Inclusion Picnic (TBC depending restrictions)
- Use of Minibus to Access Local Life Skill Trips for high level SEN and Inclusion Children
- Learning Mentor Counselling session available for families/children after school through invite





## Integrated Technology

Since 2019, Waterfield has developed a strong vision for Integrated Technology. Never before has this goal been within such tangible reach.

Building on the success of additional funding and staff's use of Google Classroom, we will be aiming to integrate technology across our entire curriculum. All classes have access to Small Tech Hubs that sit in classrooms, iPad banks which will supplement EYFS/Key Stage One and our Main Tech Hub now boasts increased capacity.

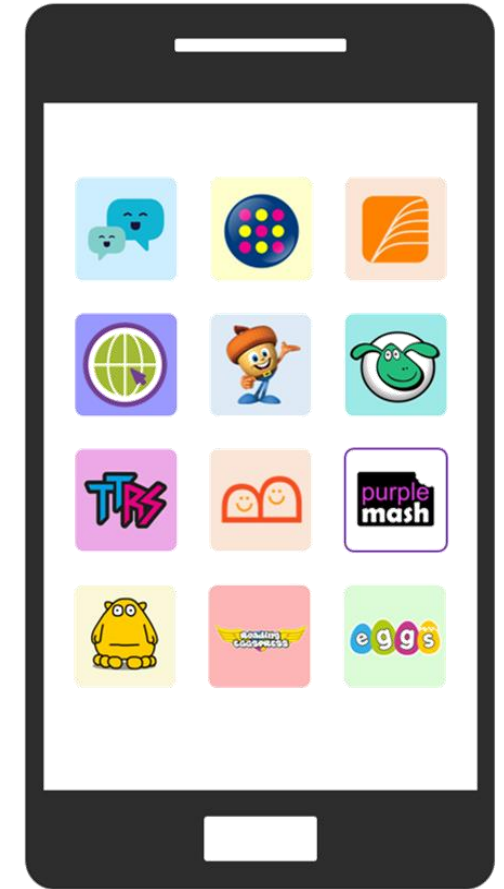
In our Upper School we are developing a trial of 1 to 1 iPad devices for Year 6 and a combination of technology access for Year 5. By April, we are also hopeful that all interactive boards across the school will be upgraded to the newest screens, supported by visualisers.

We also can't wait to get our Robotics/Computer Science lessons running – our Robot friends have already landed and can be seen in our virtual tour video but, due to the Lockdown, were never let out of their boxes to truly bleep, blink and buzz their way into our hearts!

Continued use of Google Classroom and our digital platforms will make Waterfield a true 'School of Tomorrow'.



## Digital Platforms



- MyMaths
- Oxford Reading Buddy
- Accelerated Reader
- Purple Mash
- Languageut
- Gooseberry Planet
- Busy Things
- TT Rockstars
- Mathseeds
- Nessy
- Reading Eggspress
- Reading Eggs



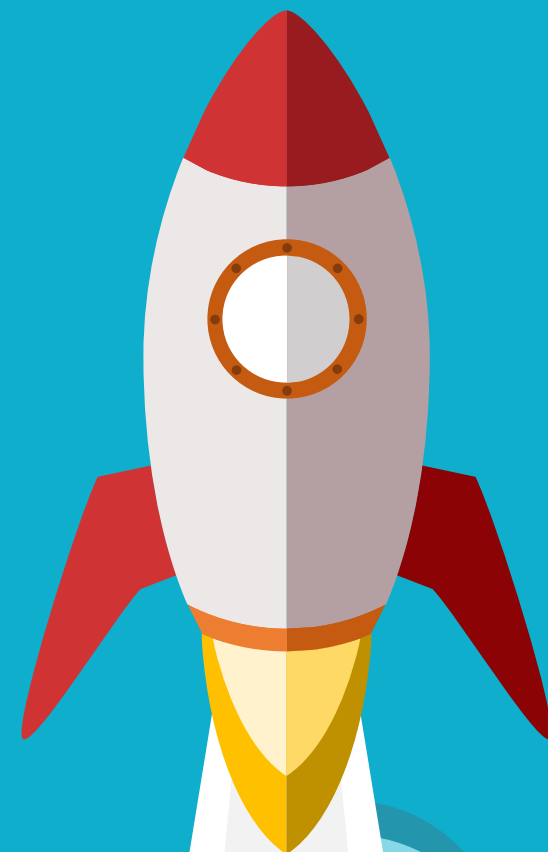
## Next Steps...

Waterfield has carefully constructed and mapped out our 'Road for Recovery'. This has been carefully supported and builds upon our already strong vision to deliver 'Exceptional Education for All'.

As we fully 'Recover' and 'Catch Up', we will undertake many reflection points; adapting and enhancing our plans as we continue to develop and move forward together.

It is the application of the above that enables our 'Road to Recovery' to truly embody 'Aiming High and Achieving our Best'.

Rebuilding and Recovery will take time, however through the application of our School Values, close community and excellent curriculum we are confident we have a firm launch pad to **BLAST OFF** towards **Success** and **Excellence**.







Waterfield Primary School

# Road to Recovery

Background images © Copyright Showeet.com

